

The role of local authorities in implementing cross-sectoral mental health promotion

Nordic Summit on Mental Health 2021

Dr. Fredrik Lindencrona, PhD (fredrik.Lindencrona@skr.se)
Senior Advisor for Strategic Innovation & International Collaboration



New decisions just this week!

- Regional mental wellbeing strategy 2022-2030 in coordination with regional development strategy for Stockholm Region
- Wellbeing-budget 2022 for Norrtälje Local Authority

Grow together
Excel together
Learn together

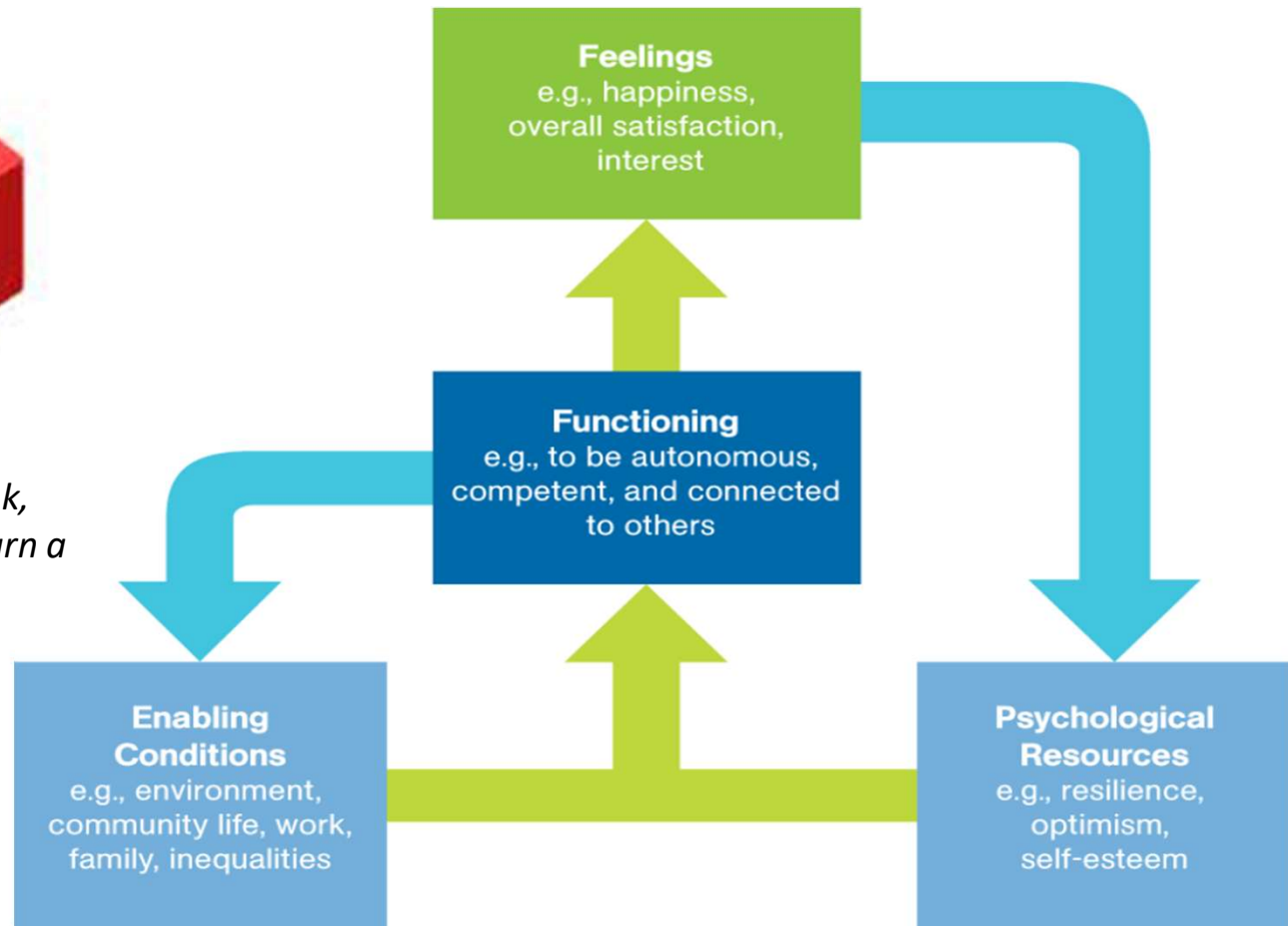
On-going learning processes

- I-CIRCLE (International Cities and Urban Regional Learning Exchange) - > 20 cities and urban regions across the globe
- Conversations are underway to form a European learning network between cities
- What can we do Nordic?

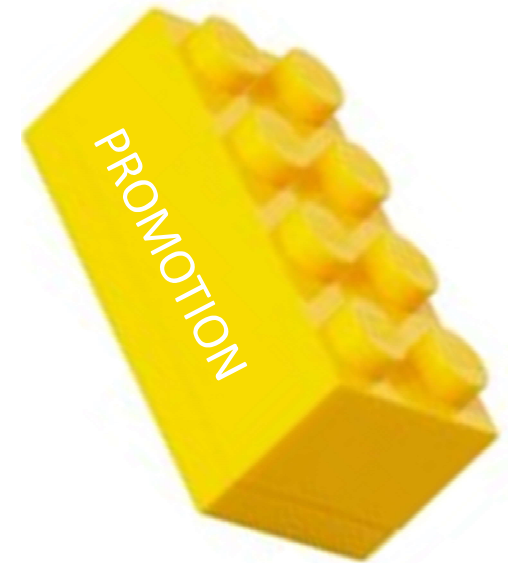
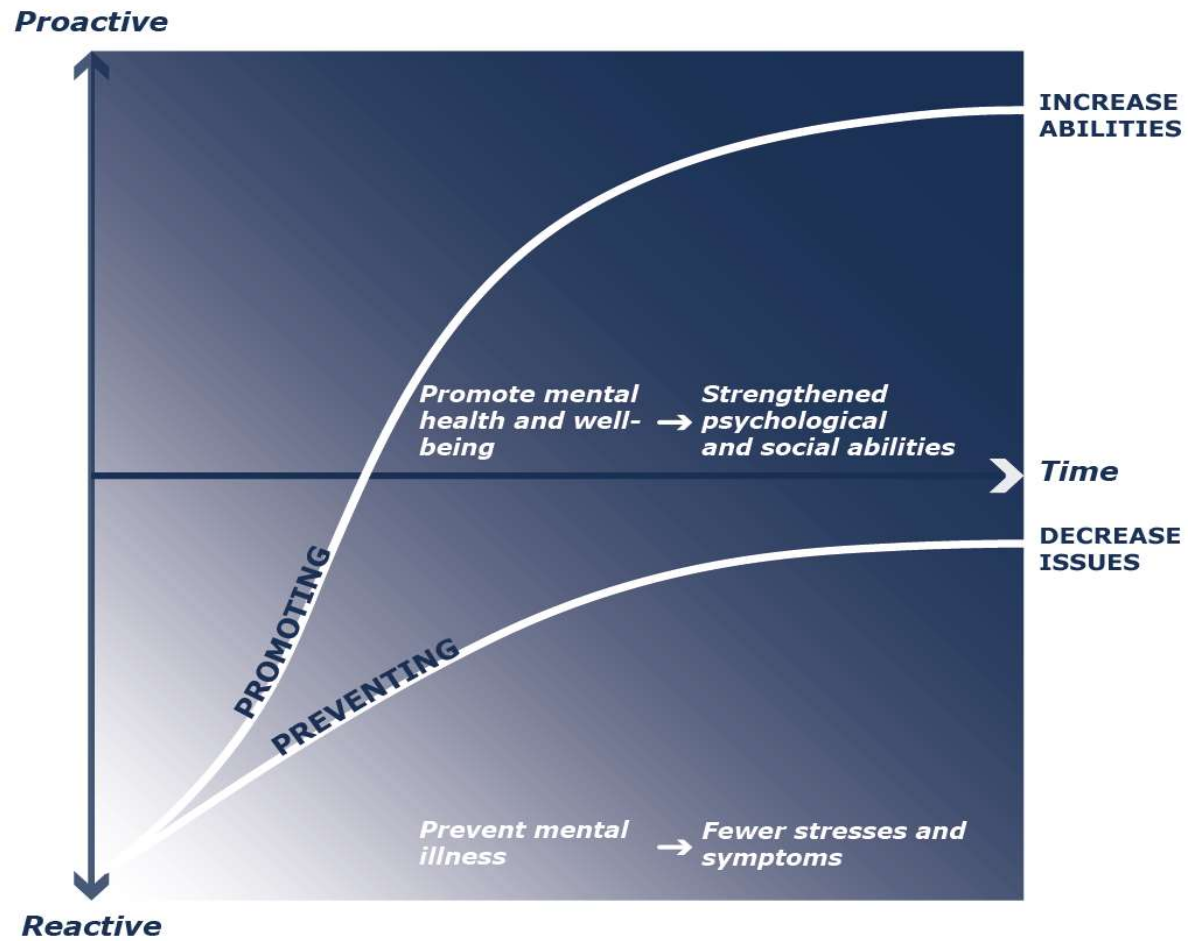
WHAT IS IT REALLY THAT WE WANT TO PROMOTE?



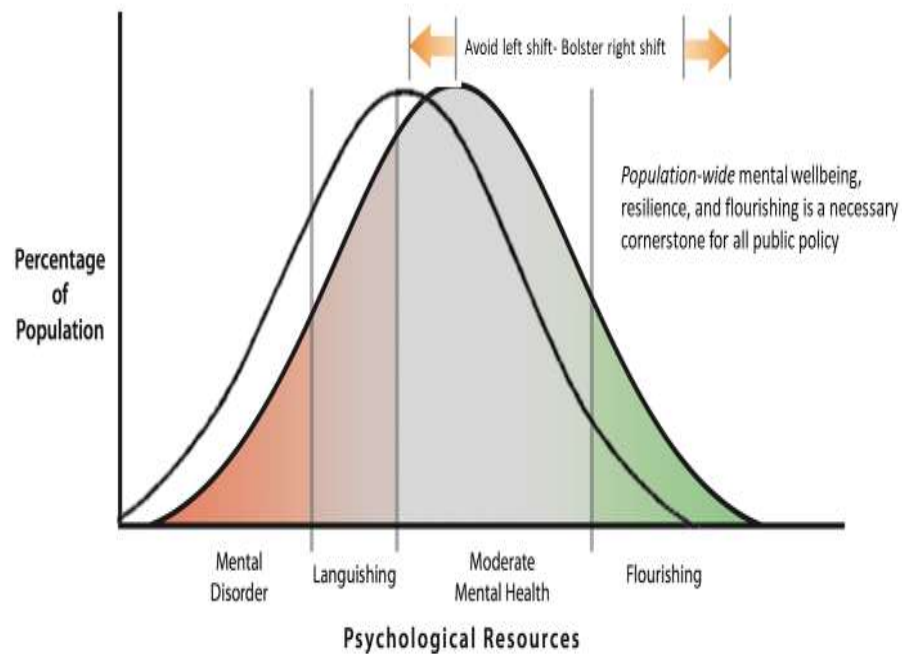
"fundamental to our collective and individual ability as humans to think, emote, interact with each other, earn a living and enjoy life" (WHO)



Good Foundations (nef 2012)



WIDESPREAD INEQUAL EFFECTS OF THE PANDEMIC



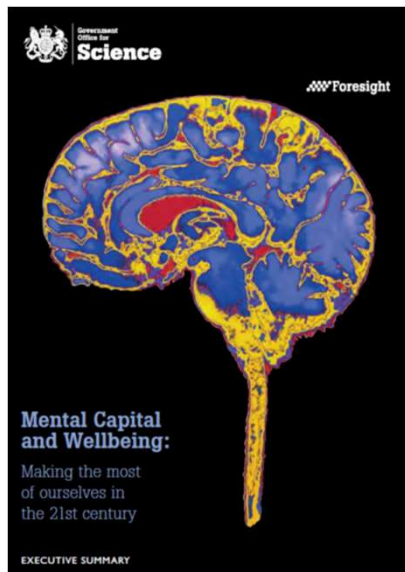
Based on figures in Huppert et al. (Eds). The Science of Well-being

Key contributors to mental health equality



© Centre for Mental Health, 2020

Many excellent technologies exist – so just do it! Or?

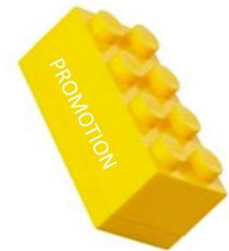


Annual Review of Public Health
**The Economic Case for the
Prevention of Mental Illness**

David McDaid,¹ A-La Park,¹ and Kristian Wahlbeck²

¹Personal Social Services Research Unit, Department of Health Policy, London School of Economics and Political Science, London WC2A 2AE, United Kingdom;
email: d.mcdaid@lse.ac.uk, a.park@lse.ac.uk

²The Finnish Association for Mental Health, 00240 Helsinki, Finland;
email: Kristian.Wahlbeck@mielenterveysseura.fi

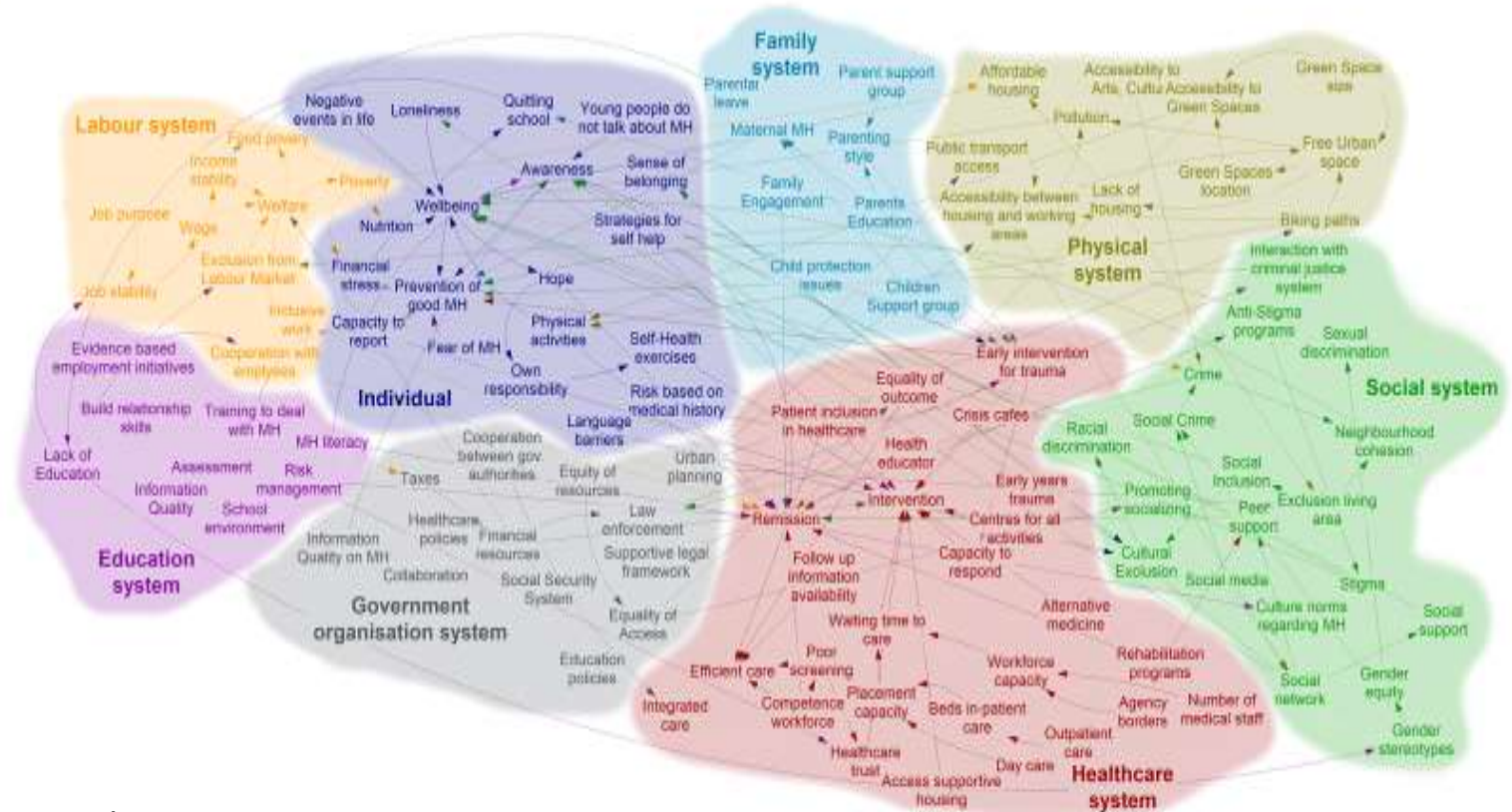




Mapping the system of mental health & wellbeing

System levels

- People
- Groups
- Organizations
- Neighbourhoods
- Local Authorities
- Regions
- Countries
- Continents
- Global



Sectors:

Housing & Planning, Education, Work, Culture, Leisure, Healthcare, etc.

"A system of systems" Moustaid, Kornevs, Lindencrona, Meijer 2020

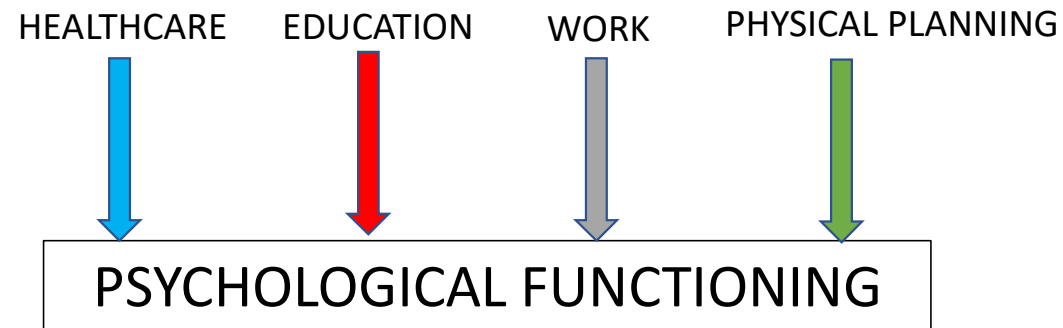
Technology is the answer, but what was the question?

Cedric Price 1965



WHY NOW?
WHAT FOR?
TO ACHIEVE WHAT?

WE HAVE DIFFERENT LENSES ON THE HUMAN CAPABILITIES



Stakeholders need to both be willing and able

Cross sectoral mental health and wellbeing promotion that can be sustainable need to be...

ALIGNED

specified in relation to context by the stakeholders in focus

INTERDEPENDENT

interdependence with a range of other factors is recognized

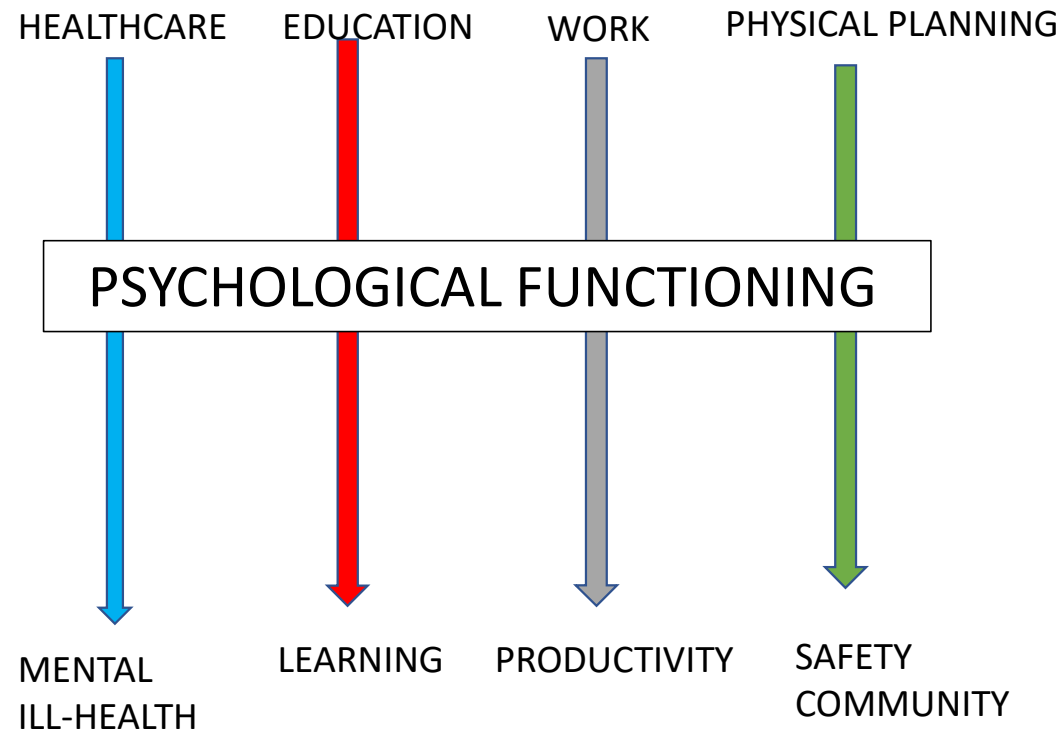
SYNERGISTIC

focused on the synergy between mental health & wellbeing and key positive outcomes for other sectors

RESILIENCE-BUILDING

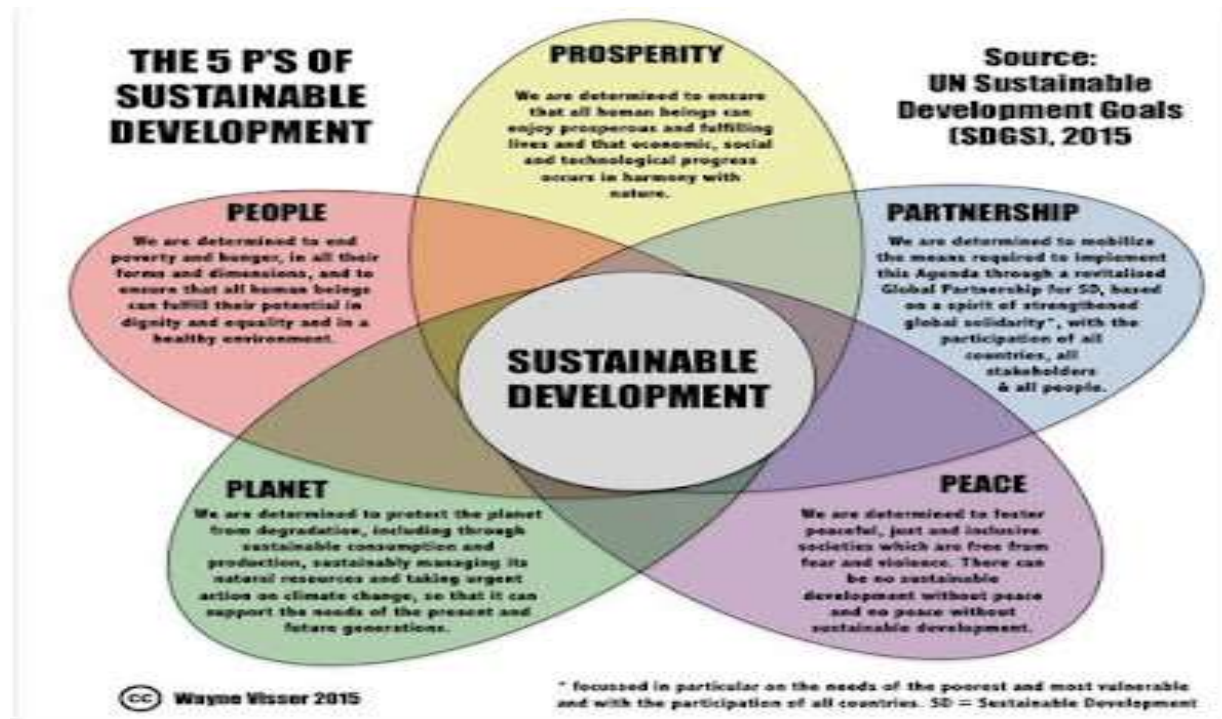
identifies how mental health & wellbeing can be mobilised to buffer against other factors

WE HAVE DIFFERENT LENSES ON THE HUMAN CAPABILITIES

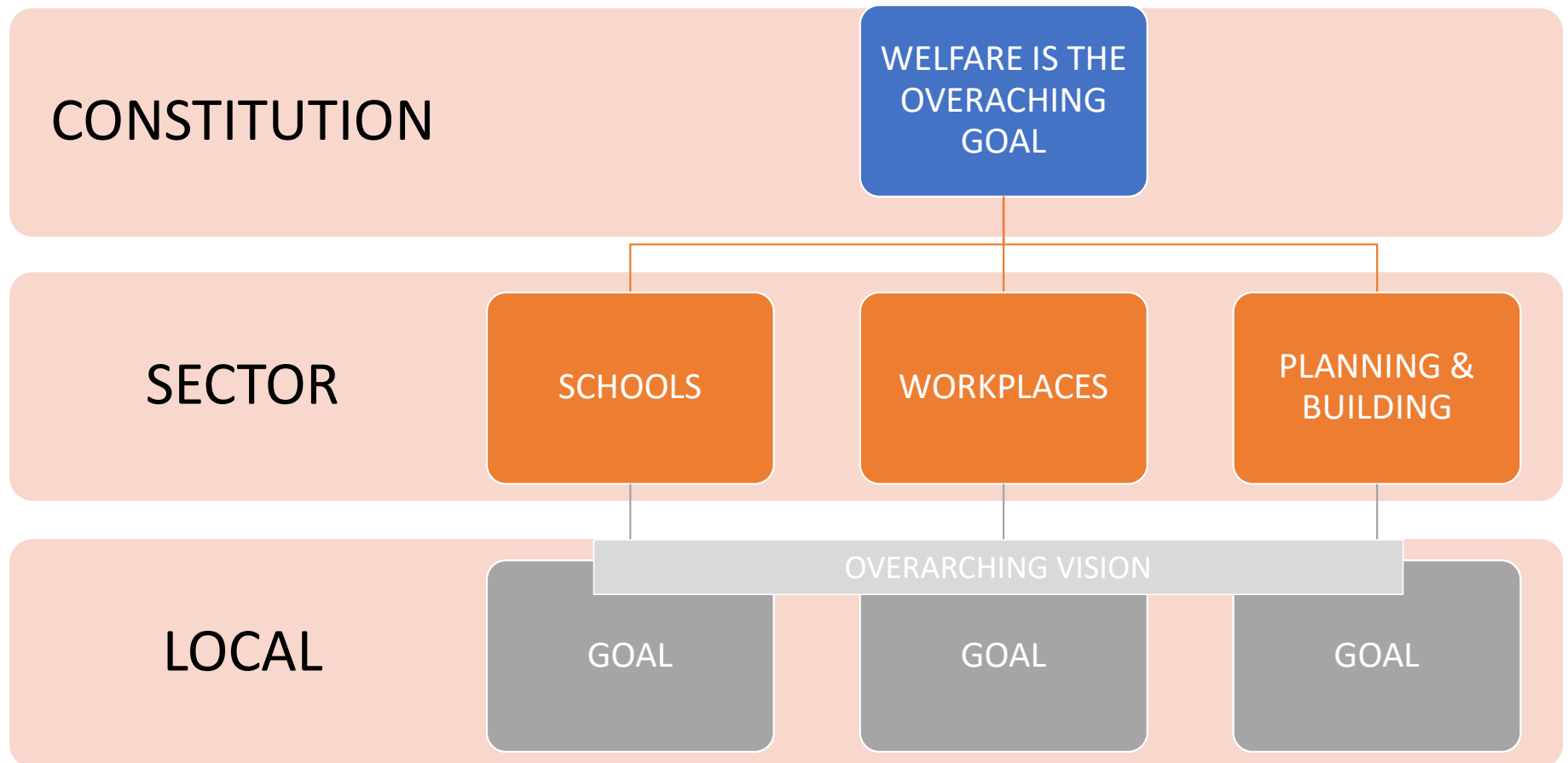


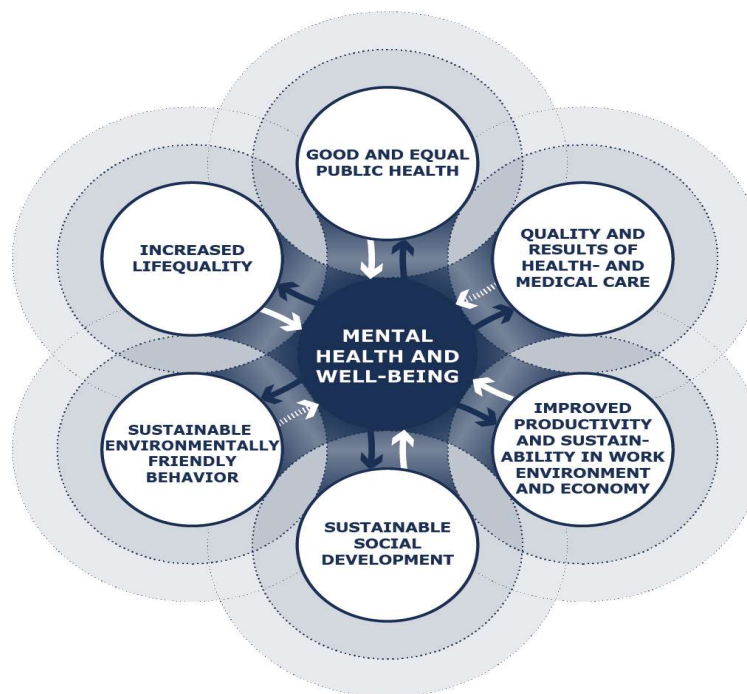
THE SHARED BURNING PLATFORM FOR ALL!

Sustainable development where no one is left behind

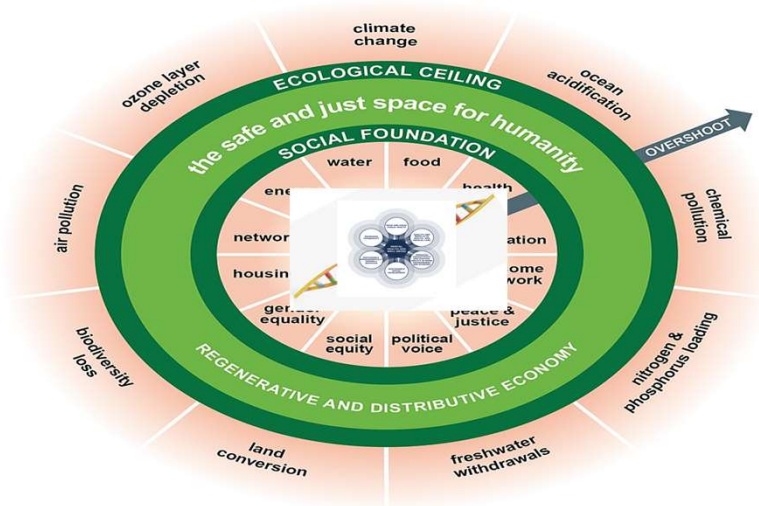


§ Mapping of MH & WB across legal frameworks (example)

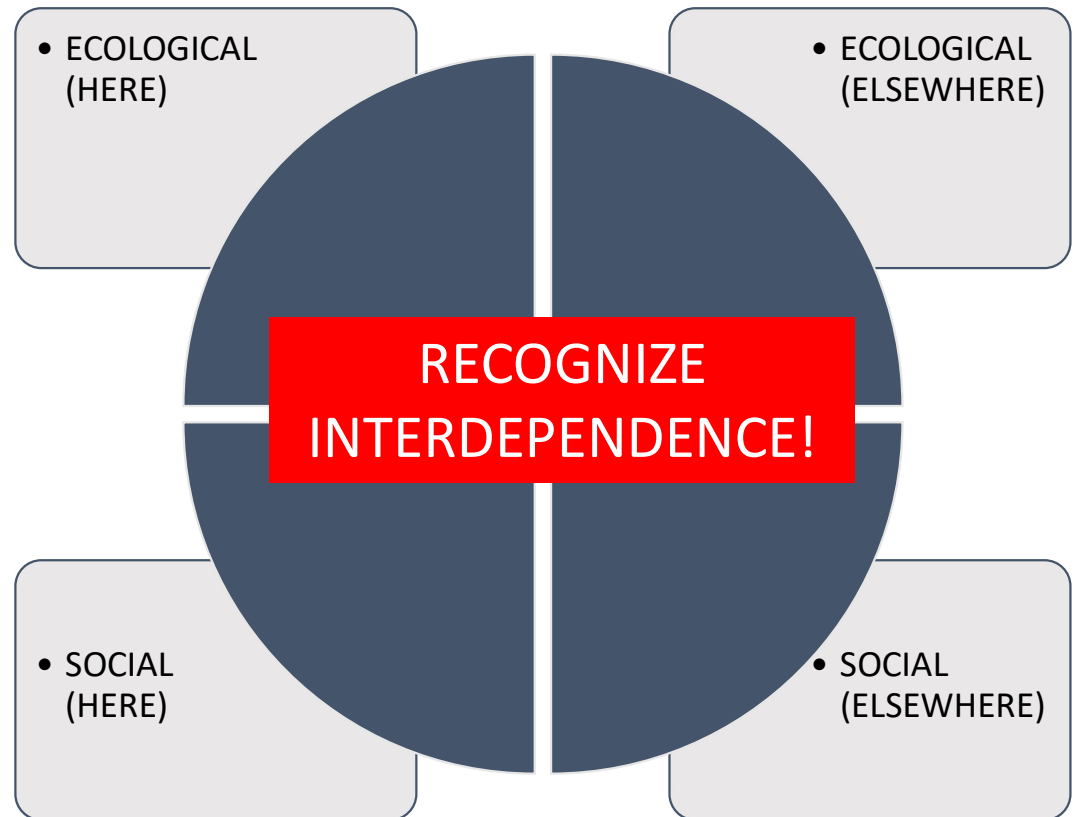




ADD WELLBEING AS MEANS TO ENDS



RECOGNIZE INTERDEPENDENCE





Earth climate/capacity

Social climate/capacity

Belkin 2020

THE 5 P'S OF SUSTAINABLE DEVELOPMENT

Source:
UN Sustainable
Development Goals
(SDGs), 2015

PROSPERITY

We are determined to ensure that all human beings can enjoy prosperous and fulfilling lives and that economic, social and technological progress occurs in harmony with nature.

PEOPLE

We are determined to end poverty and hunger, in all their forms and dimensions, and to ensure that all human beings can fulfill their potential in dignity and equality and in a healthy environment.

PARTNERSHIP

We are determined to mobilize the means required to implement this Agenda through a revitalised Global Partnership for SD, based on a spirit of strengthened global solidarity", with the participation of all countries, all stakeholders & all people.

PLANET

We are determined to protect the planet from degradation, including through sustainable consumption and production, sustainably managing its natural resources and taking urgent action on climate change, so that it can support the needs of the present and future generations.

PEACE

We are determined to foster peaceful, just and inclusive societies which are free from fear and violence. There can be no sustainable development without peace and no peace without sustainable development.

GOOD AND EQUAL
PUBLIC HEALTH

INCREASED
LIFEQUALITY

QUALITY AND
RESULTS OF
HEALTH- AND
MEDICAL CARE

MENTAL
HEALTH AND
WELL-BEING

SUSTAINABLE
ENVIRONMENTALLY
FRIENDLY
BEHAVIOR

IMPROVED
PRODUCTIVITY
AND SUSTAIN-
ABILITY IN WORK
ENVIRONMENT
AND ECONOMY

SUSTAINABLE
SOCIAL
DEVELOPMENT

CAN WE CALL THIS SUSTAINABLE WELLBEING?



DOMINATING METAPHOR

§

TAX

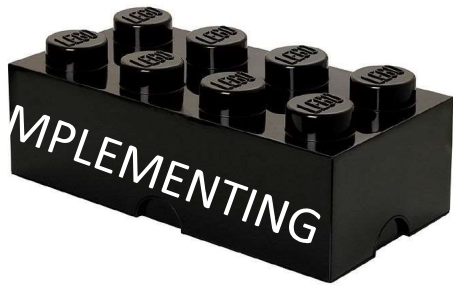


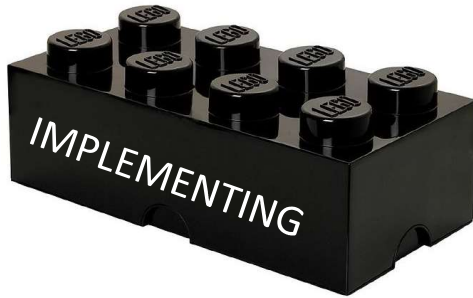
SERVICES

In addition to reforming public policies, addressing the social determinants of mental health requires changing social norms; the two are intimately related but require different approaches.

-- Ruth Shim, Michael T Compton, *Psychiatric Services*, June, 2018

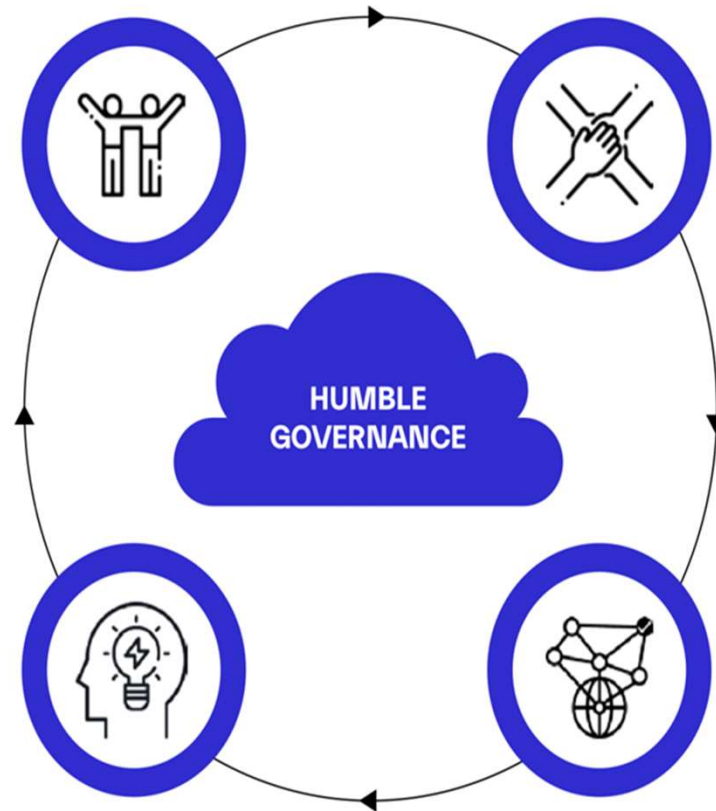
THE REAL QUESTION: How does implementing cross-sectoral mental health promotion help develop local authorities?





1 Striking a thin consensus around broad framework goals by securing political and societal collaboration

4 Revision of framework goals secures a thicker consensus by use of new shared knowledge



2 Devolved problem solving provides societal stakeholders with the autonomy to pursue the framework goals as they see fit

3 Peer-learning mechanisms ensures that collective learning is achieved across political and societal stakeholders

Humble Governance: Demos Helsinki



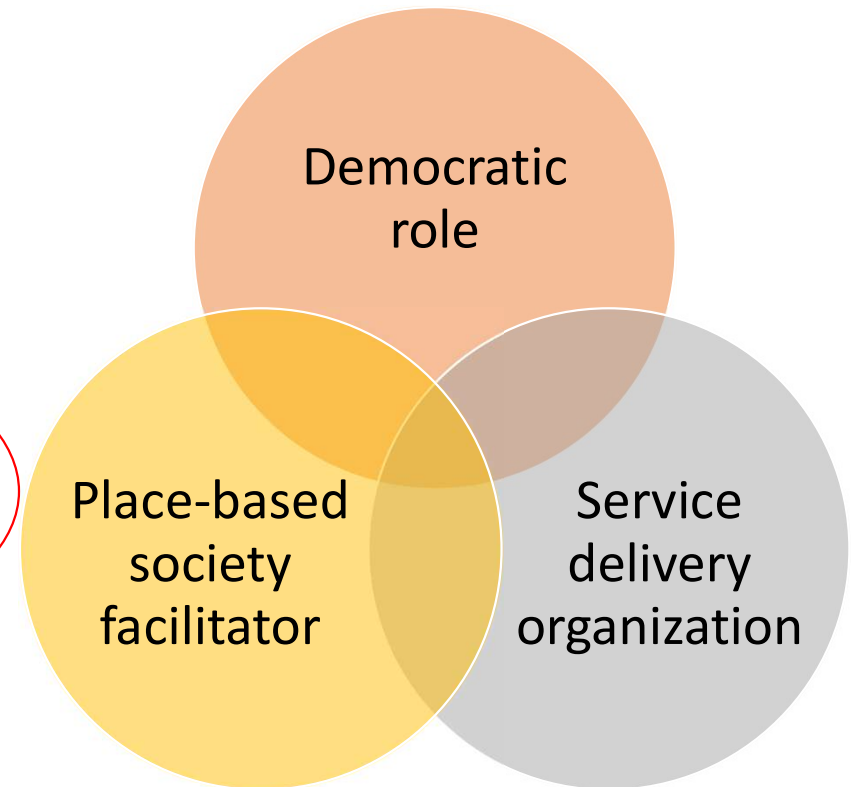
Metaphors of a local authority

Legal metaphor - legal entity with rights & responsibilities

Map metaphor - places and boundaries

People metaphor - everyday environment for people

Vending machine metaphor - service delivery organization



EXPANDING THE METAPHOR TO INCLUDE PEOPLE & PLACES TO
BUILD CONDITIONS FOR SUSTAINABLE DEVELOPMENT



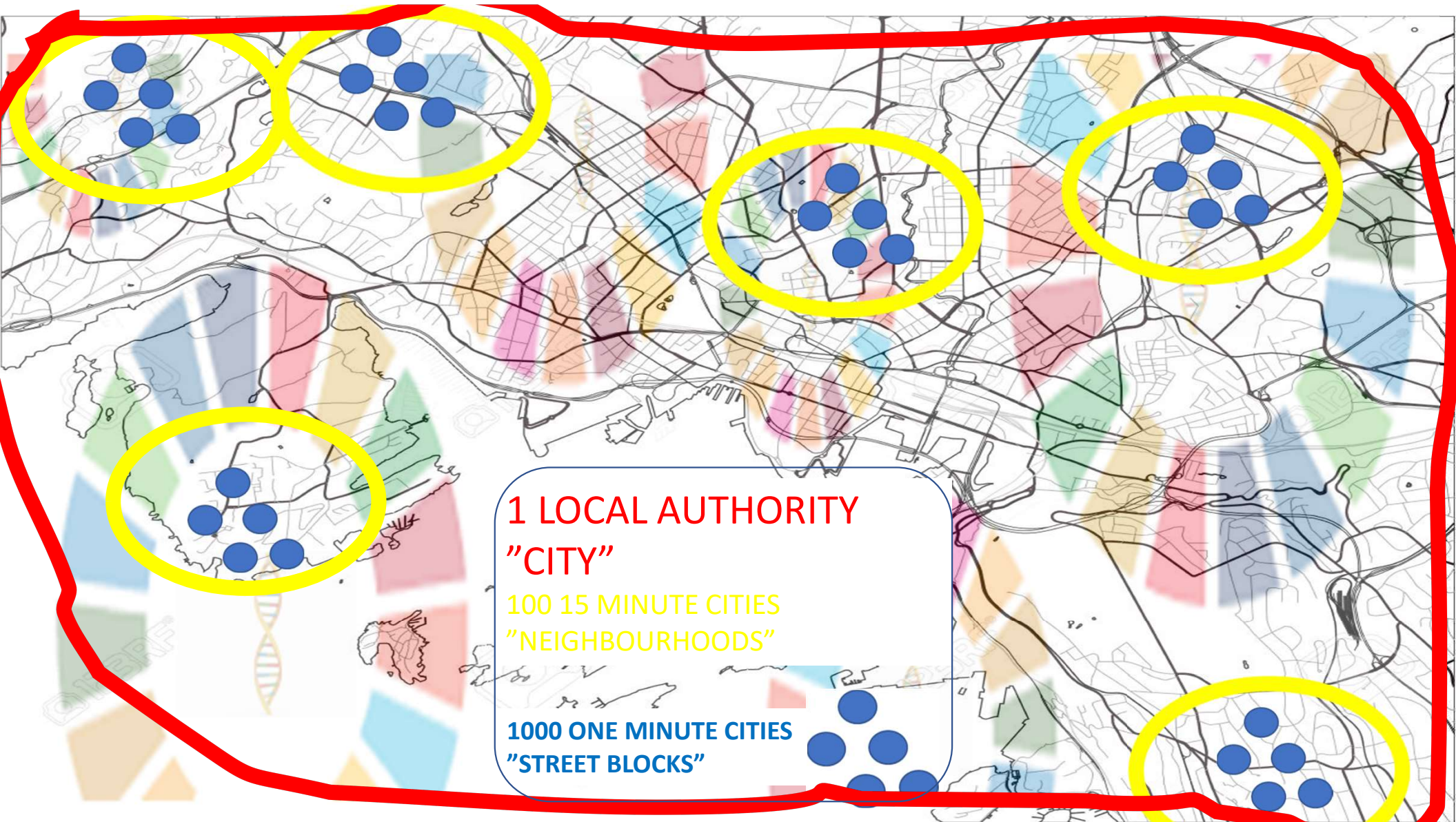
§



TAX →



SERVICES





Mission-oriented innovation policy and dynamic capabilities in the public sector

Rainer Kattel

Professor in the Economics of Innovation and Public Governance
Deputy Director, UCL Institute for Innovation and Public Purpose

Mariana Mazzucato

Professor in the Economics of Innovation and Public Value
Director, UCL Institute for Innovation and Public Purpose

Working Paper
IIPP WP 2018-05

July 2018



IIPP



What do we know about skills we need to lead complex processes?

Inner Development Goals:

Background, method and the IDG framework

1 **Being** — Relationship to Self

2 **Thinking** — Cognitive Skills

3 **Relating** — Caring for Others and the World

4 **Collaborating** — Social Skills

5 **Acting** — Driving Change



Here is an alphabetical list of the 23 skills and qualities. Further elaboration will be made further down.

Appreciation

Co-creation skills

Communication skills

Complexity awareness

Connectedness

Critical thinking

Courage

Creativity

Empathy and Compassion

Humility

Inclusive mindset and Intercultural competence

Inner compass

Integrity and Authenticity

Long-term orientation and visioning

Mobilization skills

Openness and Learning mindset

Optimism

Perseverance

Perspective skills

Presence

Self-awareness

Sense-making

Trust

THANK YOU! Let us build bridges beyond borders together
fredrik.lindencrona@skr.se

